

POLICY

LACEY TOWNSHIP BOARD OF EDUCATION

Administration
1110/Page 1 of 1
ORGANIZATIONAL CHART

1110 ORGANIZATIONAL CHART

Adopted: February 16, 2016

Revised: October 16, 2017

Revised: May 20, 2019

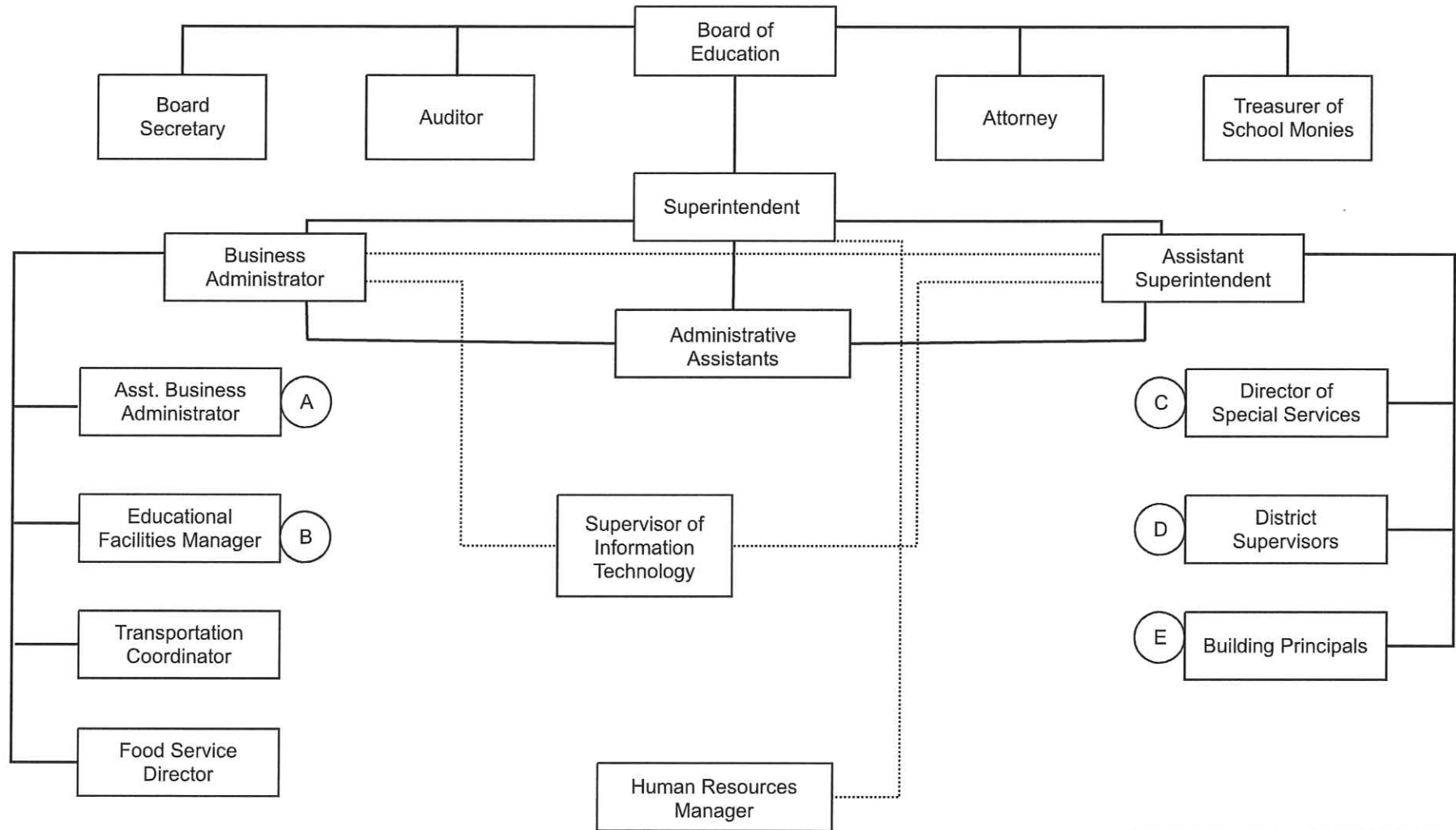
Revised:

(Chart available in the Lacey Board of Education Office)



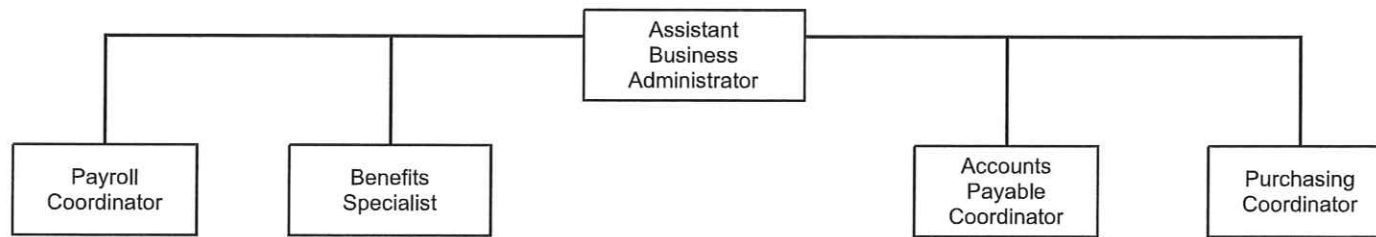
POLICY 1110
Organizational Chart

**Lacey Township
School District**

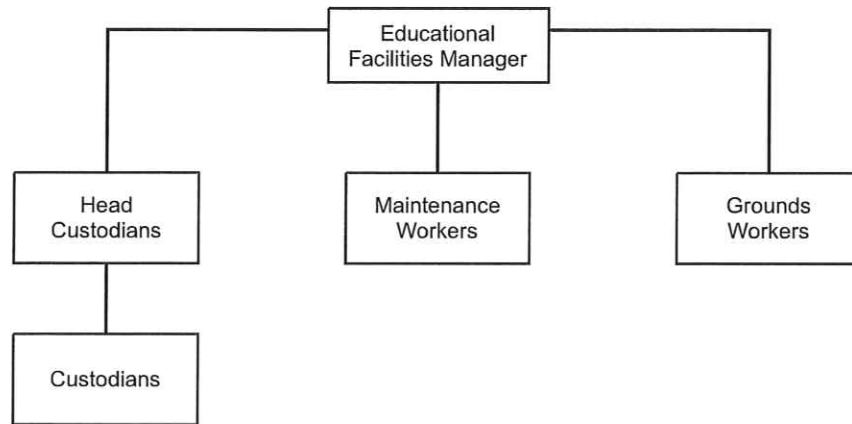


Revised
BOE Approved:

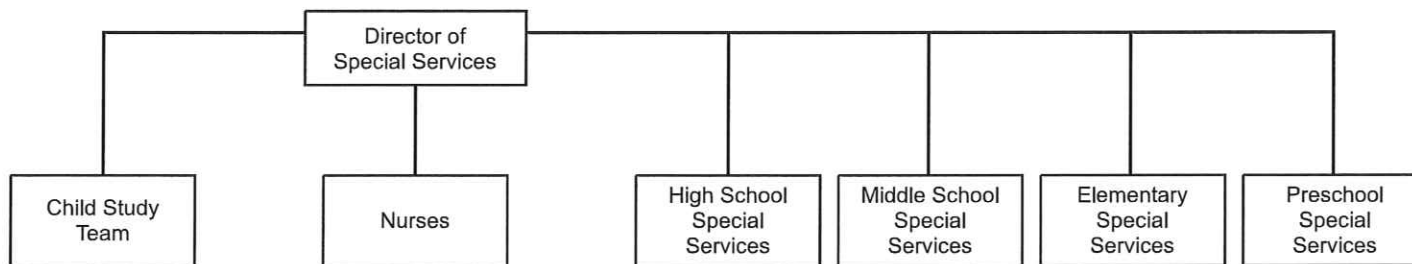
**Lacey Township
School District
A**



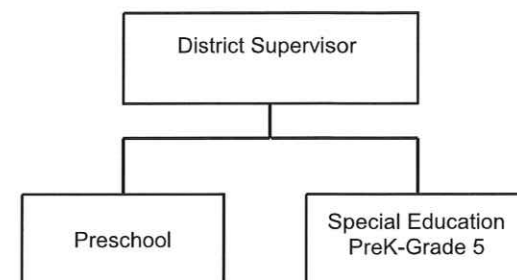
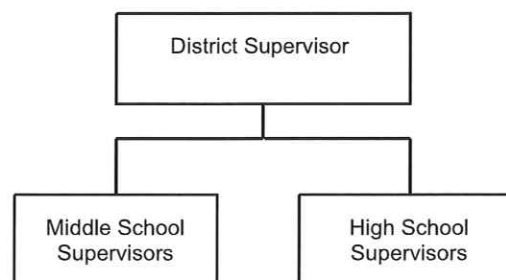
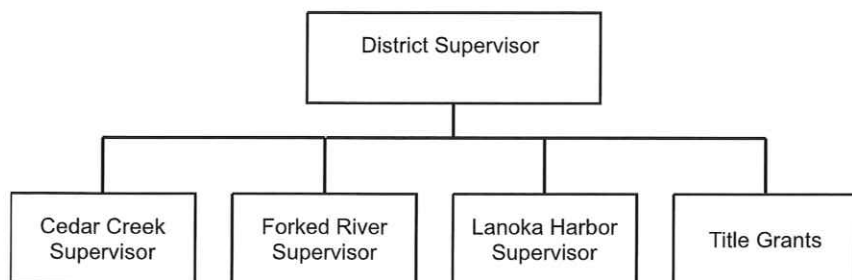
**Lacey Township
School District
B**



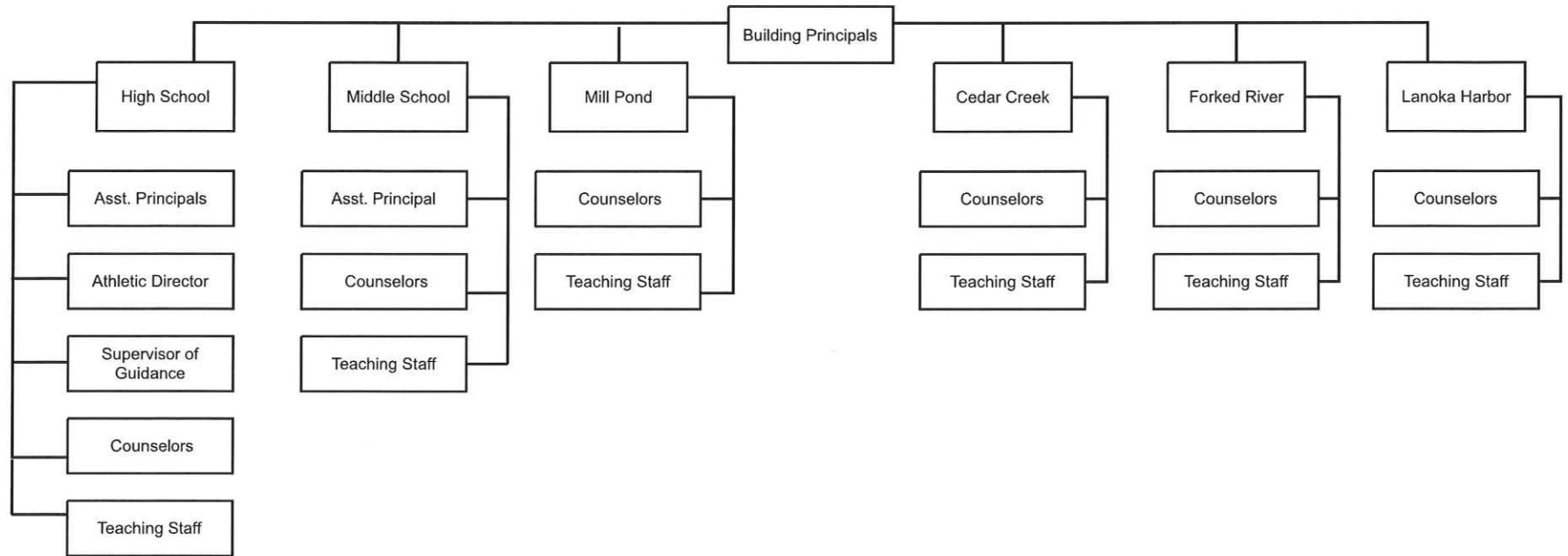
**Lacey Township
School District
C**



Lacey Township School District D



**Lacey Township
School District
E**



REGULATION GUIDE

TEACHING STAFF MEMBERS

R 3212/page 1 of 5

Attendance

M

R 3212 ATTENDANCE

A. Review of Attendance Data

1. A record shall be kept of the attendance of each teaching staff member, including teachers; educational services personnel; administrators; and other certificated staff members. Any absence, for part or all of a school day, shall be recorded along with the reason for the absence. The record will distinguish sick leave, professional days, unpaid leaves of absence, personal leave, bereavement leave, and any other leaves of absences taken by the teaching staff member. The teaching staff member's attendance record will include notation of verification of an absence where such verification is required by the Superintendent or by Policy and Regulation 1642.01. The teaching staff member's rate of absence shall be calculated at least once per school year and entered on the teaching staff member's attendance record. A teaching staff member's attendance record shall be part of the teaching staff member's personnel file.
2. A cumulative attendance record shall be assembled for each school in the school district and also for the school district as required by the New Jersey Department of Education.
3. An attendance summary shall be prepared from the cumulative attendance record. The attendance summary shall show the rate of absence for each school in the district and also for the school district.

B. Attendance Reporting and Improvement Plan

1. Planning
 - a. Each absence of a teaching staff member shall be reported by the teaching staff member in accordance with the school district's procedure.
 - b. The absence of a teaching staff member shall be provided to the teaching staff member's Principal or supervisor designated by the Superintendent, as appropriate, who shall



REGULATION GUIDE

TEACHING STAFF MEMBERS

R 3212/page 2 of 5

Attendance

determine if a substitute or replacement is required for the period of the absence.

- c. A report of such absences shall also be provided to the Superintendent or designee.
- d. The Principal or supervisor designated by the Superintendent shall determine if an absence requires further verification. Reasons for further verification may include, but are not limited to, the following:
 - (1) A pattern of absences on the same day(s) of the week;
 - (2) A pattern of absences before or after nonworking days;
 - (3) The habitual exhaustion of sick and unpaid leave.
- e. The Superintendent or designee will meet with Principals and supervisors to discuss attendance records of teaching staff members. The attendance records shall be analyzed for patterns of absences, such as excessive absenteeism in a given department, school, or work place in the school district, among certain groups of teaching staff members, for certain specific causes, or on certain days of the week, month, or year. Specific strategies for reducing the rate of absences shall be developed.

2. Implementation

- a. The Superintendent or designee or the teaching staff member's Principal or supervisor designated by the Superintendent shall be responsible for implementing a plan for the improvement of teaching staff member attendance.
- b. The teaching staff member's Principal or supervisor designated by the Superintendent shall encourage the



REGULATION GUIDE

TEACHING STAFF MEMBERS

R 3212/page 3 of 5

Attendance

regular attendance of teaching staff members in their workplace, school, or department. The teaching staff member's Principal or supervisor designated by the Superintendent shall maintain contact with absent employees and may confer with teaching staff members who return from an absence of any duration.

- c. The Superintendent shall direct Principals and supervisors designated by the Superintendent to incorporate a teaching staff member's attendance record in the teaching staff member's evaluation.
- d. The teaching staff member's Principal or supervisor designated by the Superintendent shall report to the Superintendent or designee any teaching staff member whom the Principal or supervisor designated by the Superintendent suspects of misusing sick leave or falsifying the reasons for an absence.

3. Counseling

- a. The Superintendent, Principal, or supervisor designated by the Superintendent may schedule a conference with a teaching staff member where the number and/or pattern of the teaching staff member's absences or the reasons offered for the teaching staff member's absences may indicate a concern.
- b. Prior to the giving of any admonition, reprimand, or imposition of discipline of any kind, the Superintendent, Principal, or supervisor designated by the Superintendent shall determine the nature of the absences and consider any extenuating circumstances.
- c. A written report of any attendance conference shall be prepared and retained with the teaching staff member's evaluations. The teaching staff member shall be permitted to examine the report and affix their comments, if any, to evaluation reports.



REGULATION GUIDE

TEACHING STAFF MEMBERS

R 3212/page 4 of 5

Attendance

C. Record of Attendance

1. A record shall be kept of the attendance of all teaching staff members, including supervisors. Any absence, for part or all of a school day, shall be recorded with the reason for the absence. A teaching staff member's attendance record shall be part of the teaching staff member's personnel file.
2. The record will distinguish sick leave; professional days; unpaid leaves of absences; personal leave; bereavement leave; and any other leaves taken by the teaching staff member. The teaching staff member's attendance record will include notation of verification of an absence where such verification is required by the Superintendent, Policy 1642.01, or any other law or Board policy.
3. A teaching staff member's rate of absence shall be calculated at least once per school year and entered on the teaching staff member's attendance record.
4. At the end of each school year, the Superintendent of Schools, Principals, and teaching staff members' supervisors designated by the Superintendent will review attendance records for teaching staff members.

D. Attendance Improvement Plan

1. The attendance record prepared for teaching staff members shall be analyzed for patterns of absence, such as excessive absenteeism in a given school or work place, among certain groups of employees, for certain specific causes, or on certain days of the week, month, or year.
2. Specific strategies for reducing the rate of absences shall be developed.
3. The Superintendent shall designate an administrator or supervisor to be responsible for implementing the approved plan for the improvement of teaching staff member attendance in the school district and in schools in the district.



REGULATION GUIDE

TEACHING STAFF MEMBERS

R 3212/page 5 of 5

Attendance

4. The record of a conference(s) dealing with excessive absenteeism may serve as an element in the evaluation of any teaching staff member's performance.
- E. In-Service Training
1. The teaching staff member's Principal or supervisor designated by the Superintendent shall meet with teaching staff members at the beginning of each school year to:
 - a. Inform teaching staff members of Board policy and district regulations on attendance;
 - b. Familiarize employees with the procedures to be used in requesting, reporting, and verifying absences; and
 - c. Acquaint teaching staff members with the degree to which attendance will affect evaluation reports.

Adopted: November 5, 2005

Revised: March 19, 2018

Revised: April 16, 2018

Revised: May 18, 2023

Revised: January 18, 2024

Revised:



REGULATION GUIDE

SUPPORT STAFF MEMBERS

R 4212/page 1 of 5

Attendance

M

R 4212 ATTENDANCE

A. Review of Attendance Data

1. A record shall be kept of the attendance of each support staff member, including secretarial staff; maintenance and custodial staff; food service staff; other support staff members, and staff members that supervise support staff members. Any absence, for part or all of a school day, shall be recorded along with the reason for the absence. The record will distinguish sick leave, professional days, unpaid leaves of absence, personal leave, bereavement leave, and any other leaves of absences taken by the support staff member. The support staff member's attendance record will include notation of verification of an absence where such verification is required by the Superintendent or by Policy and Regulation 1642.01. The support staff member's rate of absence shall be calculated at least once per school year and entered on the support staff member's attendance record. A support staff member's attendance record shall be part of the support staff member's personnel file.
2. A cumulative attendance record shall be assembled for each department or classification of employees in the school district.
3. An attendance report shall be prepared from the cumulative attendance record. The attendance summary shall show the rate of absence for a department and/or classification of employee.

B. Attendance Reporting and Improvement Plan

1. Planning
 - a. Each absence of a support staff member shall be reported by the support staff member in accordance with the school district's procedure.



REGULATION GUIDE

SUPPORT STAFF MEMBERS

R 4212/page 2 of 5

Attendance

- b. The absence of a support staff member shall be provided to the support staff member's Principal or supervisor designated by the Superintendent, as appropriate, who shall determine if a substitute or replacement is required for the period of the absence.
- c. A report of such absences shall also be provided to the Superintendent or designee.
- d. The supervisor designated by the Superintendent shall determine if an absence requires further verification. Reasons for further verification may include, but are not limited to, the following:
 - (1) A pattern of absences on the same day(s) of the week;
 - (2) A pattern of absences before or after nonworking days;
 - (3) The habitual exhaustion of sick and unpaid leave.
- e. The Superintendent or designee will meet with the support staff member supervisors to discuss attendance records of support staff members. The attendance records shall be analyzed for patterns of absences, such as excessive absenteeism in a given department, school, or work place in the school district, among certain groups of support staff members, for certain specific causes, or on certain days of the week, month, or year. Specific strategies for reducing the rate of absences shall be developed.

2. Implementation

- a. The Superintendent or designee or the support staff member's supervisor designated by the Superintendent, shall be responsible for implementing a plan for the improvement of support staff member attendance.



REGULATION GUIDE

SUPPORT STAFF MEMBERS

R 4212/page 3 of 5

Attendance

- b. The support staff member's supervisor designated by the Superintendent shall encourage the regular attendance of the support staff members in their workplace, school, or department. The support staff member's supervisor designated by the Superintendent shall maintain contact with absent employees and may confer with support staff members who return from an absence of any duration.
- c. The Superintendent shall direct support staff member supervisors to incorporate a support staff member's attendance record in the support staff member's evaluation.
- d. The support staff member's supervisor designated by the Superintendent shall report to the Superintendent or designee any support staff member whom the supervisor suspects of misusing sick leave or falsifying the reasons for an absence.

3. Counseling

- a. The Superintendent or supervisor designated by the Superintendent may schedule a conference with a support staff member where the number and/or pattern of the support staff member's absences or the reasons offered for the support staff member's absences may indicate a concern.
- b. Prior to the giving of any admonition, reprimand, or imposition of discipline of any kind, the Superintendent or supervisor designated by the Superintendent shall determine the nature of the absences and consider any extenuating circumstances.
- c. A written report of any attendance conference shall be prepared and retained with the support staff member's evaluations. The support staff member shall be permitted to examine the report and affix their comments, if any, to evaluation reports.



REGULATION GUIDE

SUPPORT STAFF MEMBERS

R 4212/page 4 of 5

Attendance

C. Record of Attendance

1. A record shall be kept of the attendance of all support staff members, including supervisors. Any absence, for part or all of a school day, shall be recorded with the reason for the absence. A support staff member's attendance record shall be part of the employee's personnel file.
2. The record will distinguish sick leave; professional days; unpaid leaves of absences; personal leave; bereavement leave; and any other leaves taken by the support staff member. The support staff member's attendance record will include notation of verification of an absence where such verification is required by the Superintendent, Policy 1642.01, or any other law or Board policy.
3. A support staff member's rate of absence shall be calculated at least once per school year and entered on the support staff member's attendance record.
4. At the end of each school year, the Superintendent, School Business Administrator/Board Secretary, and support staff members' supervisors will review attendance records for support staff members.

D. Attendance Improvement Plan

1. The attendance record prepared for support staff members shall be analyzed for patterns of absence, such as excessive absenteeism in a given school or work place, among certain groups of employees, for certain specific causes, or on certain days of the week, month, or year.
2. Specific strategies for reducing the rate of absences shall be developed.
3. The Superintendent shall designate an administrator or supervisor to be responsible for implementing the approved plan for the improvement of support staff member attendance in the school district.



REGULATION GUIDE

SUPPORT STAFF MEMBERS

R 4212/page 5 of 5

Attendance

4. The record of a conference(s) dealing with excessive absenteeism may serve as an element in the evaluation of any support staff member's performance.
- E. In-Service Training
1. The School Business Administrator/Board Secretary or supervisor designated by the Superintendent shall meet with support staff members at the beginning of each school year to:
 - a. Inform support staff members of Board policy and district regulations on attendance;
 - b. Familiarize employees with the procedures to be used in requesting, reporting, and verifying absences;
 - c. Acquaint support staff members with the degree to which attendance will affect evaluation reports.

Adopted: March 16, 2023

Revised: January 18, 2024

Revised:



POLICY GUIDE

STUDENTS

5111/page 1 of 9

Eligibility of Resident/Nonresident Students

M

5111 ELIGIBILITY OF RESIDENT/NONRESIDENT STUDENTS

The Board of Education shall admit to its schools, free of charge, persons over five and under twenty years of age, pursuant to N.J.S.A. 18A:38-1, or such younger or older student as is otherwise entitled by law to a free public education.

Eligibility to Attend School – N.J.A.C. 6A:22-3.1, 3.2, and 3.3

The Board shall admit students eligible to attend school free of charge that are domiciled within the district as defined in N.J.A.C. 6A:22-3.1 and Regulation 5111 – Section B.

The Board shall also admit any student that is kept in the home of a person other than the student's parent or guardian, and the person is domiciled in the school district and is supporting the student without remuneration as if the student were their own child in accordance with N.J.A.C. 6A:22-3.2 and Regulation 5111 – Section C-Pursuant to N.J.S.A. 18A:38-1.c., any person who fraudulently allows a child of another person to use their residence and is not the primary financial supporter of that child and any person who fraudulently claims to have given up custody of their child to a person in another district commits a disorderly persons offense.

A student is eligible to attend school in this school district free of charge pursuant to N.J.S.A. 18A:38-1.d. if the student's parent or guardian temporarily resides within the school district and elects to have the student attend the school district of temporary residence, notwithstanding the existence of a domicile elsewhere pursuant to N.J.A.C. 6A:22-3.1(a)4. and Regulation 5111 – Section B.

A student is eligible to attend this school district free of charge in accordance with N.J.A.C. 6A:22-3.2 and Regulation 5111 – Section C.

Notwithstanding the provisions of N.J.S.A. 18A:38-1 or any other law, rule, or regulation to the contrary, a student who moves out of the school district as a result of domestic violence, sexual abuse, or other family crises shall be permitted to remain enrolled in the school district for the remainder of the school year pursuant to N.J.S.A. 18A:38-1.1 and in accordance with the provisions of N.J.A.C. 6A:22-3.2(h) and Regulation 5111 – Section C.



POLICY GUIDE

STUDENTS

5111/page 2 of 9

Eligibility of Resident/Nonresident Students

Except as set forth in N.J.A.C. 6A:22-3.3(b)1., immigration/visa status shall not affect eligibility to attend school. Any student who is domiciled in the school district or otherwise eligible to attend school in the school district pursuant to N.J.A.C. 6A:22-3.2 shall be enrolled without regard to, or inquiry concerning, immigration status. A student's immigration/visa status and their eligibility to attend school shall be in accordance with N.J.A.C. 6A:22-3.3(b) and Regulation 5111 – Section D.

Proof of Eligibility – N.J.A.C. 6A:22-3.4

The Board of Education shall accept a combination of forms of documentation from persons attempting to demonstrate a student's eligibility for enrollment in the school district in accordance with the provisions of N.J.A.C. 6A:22-3.4 and Regulation 5111 – Section E

In the case of a dispute between the school district and the parent of a student in regard to the student's eligibility to enroll in the school district or to remain enrolled in the school district pursuant to the provisions of N.J.S.A. 18A:38-1, the school district may request from the New Jersey Motor Vehicle Commission (NJMVC) the parent or guardian's name and address for use in verifying a student's eligibility for enrollment in the school district in accordance with the provisions of N.J.S.A. 18A:38-1.3.

Registration Forms and Procedures for Initial Assessment – N.J.A.C. 6A:22-4.1

Registration and procedures for initial determinations of eligibility will be in accordance with N.J.A.C. 6A:22-4.1 and Regulation 5111 – Section F.

Initial eligibility determinations shall be made upon presentation of an enrollment application, and enrollment shall take place immediately except in cases of clear, uncontested denials. Enrollment shall take place immediately when an applicant has provided incomplete, unclear, or questionable information, but the applicant shall be notified that the student will be removed from the school district if defects in the application are not corrected, or an appeal is not filed, in accordance with subsequent notice to be provided pursuant to N.J.A.C. 6A:22-4.2 and Regulation 5111 – Section F.



POLICY GUIDE

STUDENTS

5111/page 3 of 9

Eligibility of Resident/Nonresident Students

When a student appears ineligible based on the information provided in the initial application, the school district shall issue a preliminary written notice of ineligibility, including an explanation of the right to appeal to the Commissioner of Education in accordance with N.J.A.C. 6A:22-4.1(c)2. and Regulation 5111 – Section F

When enrollment is denied and no intent to appeal is indicated, applicants shall be advised they shall comply with compulsory education laws in accordance with N.J.A.C. 6A:22-4.1(d) and Regulation 5111 – Section F.

Enrollment or attendance at the school shall not be conditioned or denied pursuant to N.J.A.C. 6A:22-4.1(e) through (i) and Regulation 5111 – Section F.

Notices of Ineligibility – N.J.A.C. 6A:22-4.2

When a student is found ineligible to attend the school district pursuant to N.J.A.C. 6A:22 or the student's initial application is found to be deficient upon subsequent review or investigation, the school district immediately shall provide to the applicant notice that is consistent with Commissioner-provided sample form(s) and meets requirements of N.J.A.C. 6A:22-4. and Regulation 5111 – Section G.

Removal of Currently Enrolled Students – N.J.A.C. 6A:22-4.3

Nothing in N.J.A.C. 6A:22-4, this Policy, and Regulation 5111 shall preclude the Board of Education from identifying through further investigation or periodic requests for revalidation of eligibility, students enrolled in the school district who may be ineligible for continued attendance due to error in initial assessment, changed circumstances, or newly discovered information pursuant to N.J.A.C. 6A:22-4.3 and Regulation 5111 – Section H.

When a student who is enrolled and attending school based on an initial eligibility determination is later determined to be ineligible for continued attendance, the Superintendent may apply to the Board for the student's removal in accordance with the provisions of N.J.A.C. 6A:22-4.3 and Regulation 5111 – Section H.

Appeal to the Commissioner – N.J.A.C. 6A:22-5.1



POLICY GUIDE

STUDENTS

5111/page 4 of 9

Eligibility of Resident/Nonresident Students

An applicant may appeal to the Commissioner of Education the school district's determination that a student is ineligible to attend its schools in accordance with N.J.A.C. 6A:22-5.1 and Regulation 5111 – Section I.

Assessment and Calculation of Tuition – N.J.A.C. 6A:22-6

If no appeal to the Commissioner is filed by the parent, guardian, adult student, or district resident keeping an affidavit student following notice of an ineligibility determination, the Board of Education may assess tuition for up to one year of a student's ineligible attendance, including the twenty-one day period provided by N.J.S.A. 18A:38-1 for appeal to the Commissioner in accordance with N.J.A.C. 6A:22-6.1 and Regulation 5111 – Section J. Tuition will be assessed and calculated in accordance with N.J.A.C. 6A:22-6.3 and Regulation 5111 – Section J.

If an appeal to the Commissioner is filed by the parent, guardian, adult student, or district resident keeping an affidavit student and the petitioner does not sustain the burden of demonstrating the student's right to attend the school district, or the petitioner withdraws the appeal, fails to prosecute, or abandons the appeal by any means other than settlement agreeing to waive or reduce tuition, the Commissioner may assess tuition in accordance with the provisions of N.J.A.C. 6A:22-6.2(a) and Regulation 5111 – Section J. Upon the Commissioner's finding that an appeal has been abandoned, the Board may remove the student from school and seek tuition in accordance with N.J.A.C. 6A:22-6.2(a)1. and Regulation 5111 – Section J.

Nonresident Students – N.J.S.A. 18A:38-3.a.

Any person not resident in the school district, if eligible except for residence, may be admitted to the schools of the district with the consent of the Board of Education upon such terms, and with payment of tuition, as the Board prescribes. The Board of Education, with the approval of the Executive County Superintendent, shall establish a uniform tuition amount for any nonresident student admitted to the schools of the district pursuant to N.J.S.A. 18A:38-3.a. The continued enrollment of any nonresident student shall be contingent upon the student's maintenance of good standards of citizenship, discipline, attendance, and payment of tuition.



POLICY GUIDE

STUDENTS

5111/page 5 of 9

Eligibility of Resident/Nonresident Students

Children Who Anticipate Moving to or from the District

A nonresident student whose parent or guardian anticipates school district residency and has entered a contract to buy, build, or rent a residence in this school district may be enrolled with payment of a tuition rate approved by the Executive County Superintendent for a period of time not greater than four (4) weeks prior to the anticipated date of residency.

Students whose parent or guardian have moved away from the school district on or after March 1st and twelfth grade students whose parent or guardian have moved away from the school district on or after February 1st will be permitted to finish the school year in this school district with payment of a tuition rate as approved by the Executive County Superintendent.

Children of District Employees

A child of a Board of Education employee who does not reside in this school district may be admitted to school in this district with or without the payment of tuition for the child if the child's educational program can be provided in a school in the district. If the Board requires the payment of tuition, the Board shall establish and approve a tuition rate for the child of a Board employee upon a request from the employee for their child to attend a school in the district. The tuition amount for the student is not required to follow the amount established in the uniform tuition amount charged pursuant to N.J.S.A. 18A:38-3, if applicable. This provision shall not supersede a provision included in any collective bargaining agreement.

Other Students/Nonresident Private Tuition Students

1. Any other child whose parents reside outside the school district shall be considered a nonresident. Nonresident students in Grades 3-12 may be admitted on a tuition basis when the following are completed.
 - a. The Principal certifies that class size is such that admission of an additional student would not be detrimental.
 - b. The parents of the applicant and the applicant (Grade three and above) complete the application form and sign it. This will be done annually.
 - c. All required academic records and other application support materials have been submitted.



POLICY GUIDE

STUDENTS

5111/page 6 of 9

Eligibility of Resident/Nonresident Students

- d. The applicant and his/her parent(s) are interviewed by the principal.
 - e. The administration recommends admission and the Board accepts the applicant.
 - f. The parent signs a Private Tuition contract with the Board of Education.
2. Private Tuition admission decisions will be made accordingly to written criteria developed by the Superintendent of Schools and approved annually by the Board of Education. The Board recognizes that in some years the number of applications may exceed the number of admissions possible in any class. The administration is to select and recommend for approval those students who are most likely to succeed in the academic/behavioral environment of the schools.
3. The Board reserves the right to withdraw nonresident private tuition status from any student admitted under this policy for academic or disciplinary reasons or failure to pay tuition. If this occurs, the home district of the student will be notified. Students are admitted under this policy with the assumption that their educational needs can be addressed at an incremented cost to the district equal to or less than the amount of tuition that are asked to pay. Should it be determined at any time that this is not so the Board reserves the right to withdraw tuition status. The Board may grant an exception to this position and grant non-resident private tuition status to a student in need of additional services for special education or other conditions, however, if this exemption is granted, the parents shall be financially responsible for all costs associated with the extra services in addition to the non-resident private tuition that would normally be charged. Additionally, the placement and program decisions shall remain unilaterally the Board's prerogative. Parents seeking this exception would be required to agree to these conditions in order to receive consideration.
4. All nonresident private tuition students must re-apply for re-admission in each school year. Re-admission decisions will be based upon criteria developed by the Superintendent and approved by the Board on an annual basis.



POLICY GUIDE

STUDENTS

5111/page 7 of 9

Eligibility of Resident/Nonresident Students

5. In accordance with law and the Board's own policy the decision to admit or not or re-admit a nonresident private tuition student shall not be based upon gender, race, religion, economic status or social status.

Nonresident Tuition Rates

1. The rates for nonresident private tuition students shall be set annually by resolution of the Board of Education.
2. Should the Board fail to set a new rate by August 1 of any year, the preceding school year's nonresident private tuition rate shall ne increased by amount of increase added to the rate of taxation. The new rate will then be in effect for the subsequent school year.
3. Children of all nonresident employees may attend district schools if accepted under the provisions of this policy, at half tuition.
4. Tuition shall be payable in two installments. Half of the tuition is paid upon receipt of contract. The second and final payment is to be made by January of the school year in which the student is enrolled. A late fee of \$20.00 will be charged for tuition payments received after the 15th of the month. Tuition in arrears of two weeks shall be considered just cause to release a student. Nonpayment of tuition shall result in forfeiture of nonresident tuition status. The student's home school district will then be notified.
5. The rates for nonresident private tuition students who enroll full-time in the LTHS-OCC College Academy in their Junior and Senior Year of high school, may attend at half tuition. Students and their parents shall be responsible for the cost of Ocean County College tuition.
6. Siblings of nonresident private tuition students who reside in the same household, who also wish to attend the Lacey Township School District as a nonresident private tuition student will receive a 20% discount. The sibling discount shall not apply to children of district employees.



POLICY GUIDE

STUDENTS

5111/page 8 of 9

Eligibility of Resident/Nonresident Students

F-1 Visa Students

The school district is not required to, but may permit the attendance of F-1 Visa students into the school district only with the payment of full tuition and a signed tuition contract. The district may require advance payment of full tuition before providing the requested I-20 Form, in accordance with the provisions of Federal regulation 8 CFR 214.3. A F-1 Visa is granted to a foreign student through an application process that must include, but is not limited to, signed approval by the receiving school district exhibiting the receiving school district will accept the foreign student for enrollment and the foreign student's proof of financial means to pay the full tuition to the receiving school district for the academic year.

The host family must be domiciled in the school district and shall submit a request to the Superintendent of Schools with supporting documentation as determined by the Superintendent or designee. A student with a F-1 Visa must be approved by the Board for attendance in the school district. The student's continued attendance in the school district shall be conditioned on a satisfactory attendance and disciplinary record.

J-1 Visa Students

The school district is not required to, but may permit the attendance of J-1 Visa students into the school district. The host family must be domiciled in the school district and shall submit a request to the Superintendent of Schools with supporting documentation as determined by the Superintendent or designee. A student with a J-1 Visa must be approved by the Board for attendance in the school district and shall not pay tuition. The student's continued attendance in the school district shall be conditioned on a satisfactory attendance and disciplinary record.

N.J.S.A. 18A:38-1; 18A:38-1.1; 18A:38-1.3; 18A:38-3;

18A:38-3.1; 18A:7B-12

N.J.A.C. 6A:14-3.3; 6A:17-2.1 et seq.; 6A:22-1.1 et seq.

8 CFR 214.3



POLICY GUIDE

STUDENTS

5111/page 9 of 9

Eligibility of Resident/Nonresident Students

Adopted: June 20, 2016
Revised: April 16, 2018
Revised: March 18, 2019
Revised: January 21, 2021
Revised: May 19, 2022
Revised: January 18, 2024
Revised:



POLICY

LACEY TOWNSHIP BOARD OF EDUCATION

Students
5620/Page 1 of 2
EXPULSION (M)

5620 EXPULSION (M)

The Board of Education recognizes that expulsion from this district is the most severe sanction that can be imposed upon a student.

The Board may expel a general education student from school, pursuant to N.J.S.A. 18A:37-2, only after the Board has provided the following:

1. The procedural due process rights set forth in N.J.A.C. 6A:16-7.1(c) 3 and 7.3, and as outlined in Policy and Regulation 5610, subsequent to a long-term suspension pursuant to N.J.A.C. 6A:16-7.3; and
2. An appropriate educational program or service, based on the criteria set forth under N.J.A.C. 6A:16-7.3(f) and as outlined in Regulation 5610.
 - a. The educational program or service shall be consistent with the provisions of N.J.A.C. 6A:16-9.2 - Program Criteria; N.J.A.C. 6A:16-10.2 - Home or Out-of-School Instruction for General Education Students; N.J.A.C. 6A:14-2.1 et seq. - Special Education, Procedural Safeguards; and N.J.A.C. 6A:14-4.3 - Special Education, Program Options, whichever are applicable; or
 - b. The educational services provided, either in school or out-of-school, shall be comparable to those provided in the public schools for students of similar grades and attainments, pursuant to N.J.S.A. 18A:38-25.

An appeal of the Board's decision regarding the cessation of the student's general education program shall be made to the Commissioner of Education in accordance with N.J.S.A. 18A:6-9 and N.J.A.C. 6A:3-1.3 through 1.17. The Board shall continue to provide an appropriate educational program or service in accordance with N.J.A.C. 6A:16-7.4(a)2 until a final determination has been made on the appeal of the Board's action to expel a student.

In accordance with the provisions of N.J.S.A. 18A:37-2a, a student in Kindergarten through grade two shall not be expelled from school, except as provided pursuant to the "Zero Tolerance for Guns Act," N.J.S.A. 18A:37-7 et seq. Students in preschool shall not be expelled, except as provided pursuant to the "Zero Tolerance for Guns Act," N.J.S.A. 18A:37-7 et seq.



The district shall implement an early detection and prevention program to: identify students in preschool through grade two who are experiencing behavioral or disciplinary problems; and provide behavioral supports for these students which may include, but not be limited to, remediation of problem behaviors, positive reinforcements, supportive interventions, and referral services. An early detection program may be incorporated into the intervention and referral services required to be established in each school pursuant to State Board of Education regulations.

In accordance with the provisions of N.J.S.A. 18A:37-2c, in the event a student may be subject to a proposed expulsion from school, the Principal shall convene a meeting, as soon as practicable, between the student and a school psychologist, a school counselor, a school social worker, a student assistance coordinator, or a member of the school's intervention and referral services team. The purpose of the meeting shall be to identify any behavior or health difficulties experienced by the student and, where appropriate, to provide supportive interventions or referrals to school or community resources that may assist the student in addressing the identified difficulties.

The requirements of N.J.S.A. 18A:37-2c shall not apply when a student's immediate removal or suspension from the school's regular education program is required pursuant to: the provisions of the "Zero Tolerance for Guns Act," (N.J.S.A. 18A:37-7 et seq.); N.J.S.A. 18A:37-2.1 – Assault by Pupil Upon Teacher, etc; Suspension; Expulsion Proceedings; N.J.S.A. 18A:37-2.2 – Offense by Pupil Involving Assault, Removal from Schools Regular Education Program; or in any other instance in which the safety and security of other students or school staff requires the student's immediate removal from school. In these instances, the meeting required pursuant to N.J.S.A. 18A:37-2c shall take place as soon as practicable following the student's removal from the school's regular education program.

The provisions of N.J.S.A. 18A:37-2c shall be construed in a manner consistent with the "Individuals with Disabilities Act," 20 U.S.C. § 1400 et seq.

A student with a disability shall only be expelled from his or her current program in accordance with N.J.A.C. 6A:14 et seq. An expulsion of a student with a disability from a receiving school shall be handled in accordance with N.J.A.C. 6A:14 et seq.

N.J.S.A. 18A:36A-9; 18A:37-2 et seq.
N.J.A.C. 6A:16-7.4; 6A:14 et seq.

Adopted:

