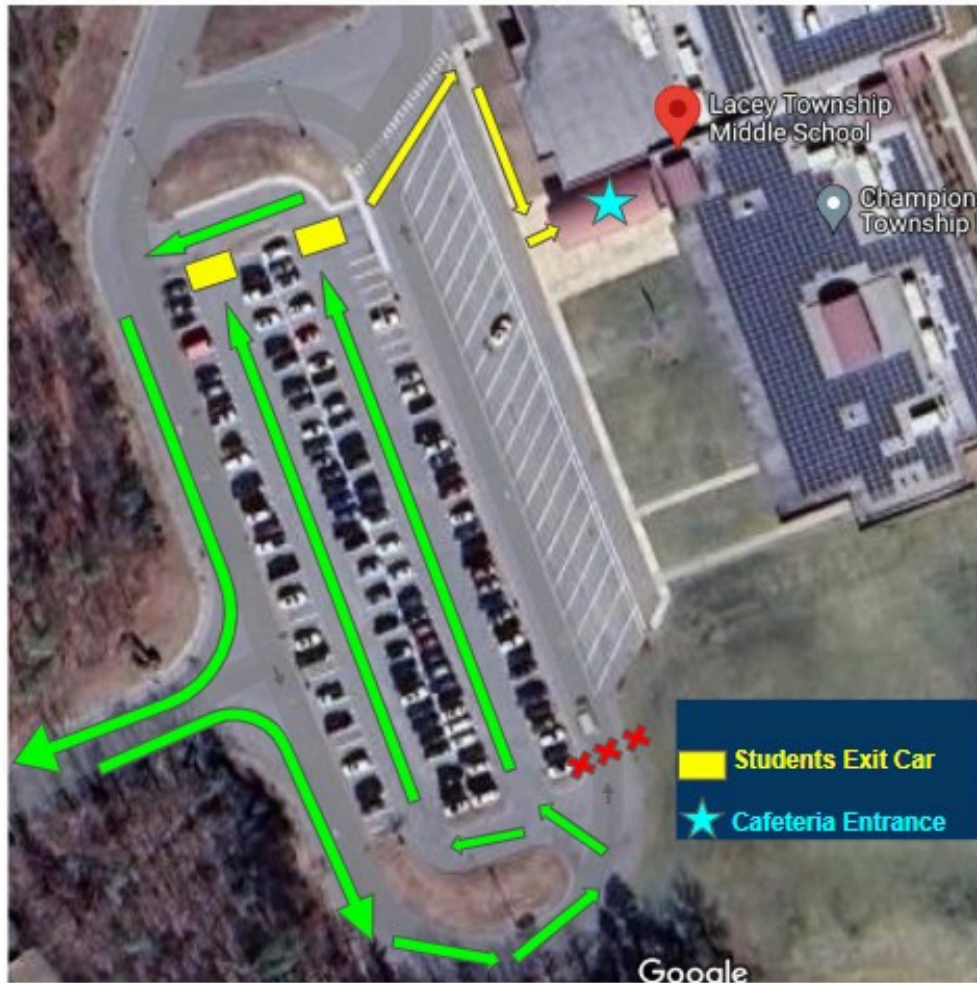





# LTMS Arrival Map



## Student Arrival Parent Drop Off - Walkers - Bikers

**DROP OFF** students/walkers may arrive 7:15am-7:30am.

-  Student drop off and students who walk to school will not be able to enter the building prior to 7:15am
-  Cars will arrive in a line in the main parking lot, and students are let out of each car one by one near the crosswalk. Cars should not enter the bus lane at any time
-  As they approach the main entrance, students will enter through the Cafeteria doors. Students will wait in the cafeteria, then proceed to their first period classes at 7:30am









# LTMS Dismissal Map



## School Bus Dismissal

### STUDENT DISMISSAL - 2:00PM

-  Supervising adults will be at the bus platform to supervise students exiting the school building
-  Traffic for students being picked up will be held until all buses have departed the parking lot
-  Students being picked up will be dismissed from the building after the buses have pulled out of the parking lot
-  The bus loop will not be open to parents during dismissal
-  Walkers and bikers will be dismissed at 2:00pm through the rear exits of the building
-  There are NO late buses after school